

ROWAN



VEST TOP

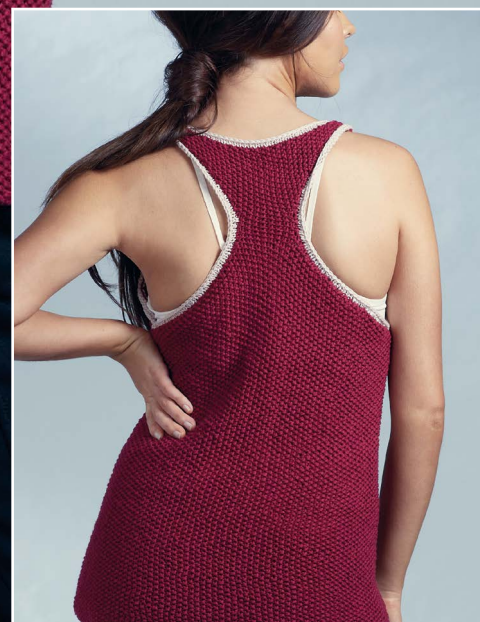
By Quail Studio

ZB236-00007

v.1



© Copyright MEZ Crafts UK Ltd., 2018.






VEST TOP

by Quail Studio

Craft 

Skill Level 

ZB236-00007 

v.1

SIZES: XS(S,M,L,XL,XXL)

YARN USED: Rowan Mako Cotton
A – 6(6,7,7,7,8) x Deep Magenta 007

**More Yarn
Information**

on knitrowan.com

B – 1(1,1,1,1,1) x Nude Pink 003

NEEDLES: 5.5mm needles

TENSION: 17.5sts and 31 rows to 10cm/4in measured over moss stitch using 5.5mm needles.

EXTRAS: Stitch holder

BACK

Using 5.5mm needles and yarn A cast on 74(78,86,88,96,104)sts.

Row 1: K1, P1 to end.

Row 2: P1, K1 to end.

Rep last 2 rows to 15cm/6in, ending with a WS row.

Next Row: (RS) Patt 2tog, patt to last 2sts, patt2tog.

72[76,84,86,94,102]sts.

Working dec as set above dec 1 st at each end of foll 40th row.

70[74,82,84,92,100]sts.

Cont in patt until back meas 40(41,42,43,44,45) cm/15¾(16¼,16½,17,17¼,17¾)in, ending with a WS row. **

Armhole

Cast off 3(3,3,3,3,4)sts at beg of next 8 rows. 46[50,58,60,68,68]sts.

Sl 1, K1, pssso, patt to last 2 stitches, patt2tog. 44[48,56,58,66,66]sts.

Rep last row 7(7,11,13,19,13) times more. 30[34,34,32,28,40]sts.

Next Row: (RS) Patt2tog, patt to last 2sts, patt 2tog.

28[32,32,30,26,30]sts.

Work 1 row in patt.

Rep last 2 rows to 10sts.

Work 6(4,0,2,0,2) rows in pattern.

Next Row: (RS) Kfb, patt to last st, Kfb. 12sts.

Work 1 row in patt.

Rep last 2 rows 13(13,13,14,14,14) times more. 38[38,38,40,40,40]sts.

Shoulder and neck

Next Row: (RS) Kfb, patt until 9sts on right hand needle, turn.

Next Row: (WS) Cast off 5sts, patt to end. 4sts.

Next Row: Kfb, patt to end. 5sts.

Next Row: Patt 1 row.

Cast off.

With RS facing slip centre 22(22,22,24,24,24)sts onto a stitch holder, patt to end.

Work other side to match reversing shapings.

FRONT

Work as for back to **.

Next Row: (RS) Patt2tog, patt to last 2sts, patt2tog. 68[72,80,82,90,98]sts.

Work 3 rows in pattern.

Rep last 4 rows to 64(68,76,78,86,94)sts.

Patt 13 rows.

Neck

Next Row: (RS) Patt2tog, patt 25(27,31,32,36,40)sts, turn. 26[28,32,33,37,41]sts.

Patt 2 rows.

Next Row: (WS) Patt2tog, patt to last 2 sts, patt2tog.

24[26,30,31,35,39] sts.

Next Row: (RS) Patt.

Next Row: (WS) Patt2tog, patt to end. 23[25,29,30,34,38] sts.

Next Row: (RS) Patt.

Rep last 4 rows once more. 20[22,26,27,31,35] sts.

Next Row: (WS) Patt2tog, patt to end. 19[21,25,26,30,34] sts.

Next Row: (RS) Patt2tog, patt to last 2 sts, patt2tog.

17[19,23,24,28,32] sts.

Patt 3 rows.

Rep last 4 rows to 9[9,9,10,10,10] sts.

Next Row: (RS) Patt2tog, patt to end. 8[8,8,9,9,9] sts.

Patt 3 rows.

Rep last 4 rows to 5[5,5,6,6,6] sts.

For 4th, 5th and 6th sizes only:

Next Row: Patt2tog, patt to end. 5 sts.

Cont without shaping until armhole measures 21(22,22,23,23,23) cm/8¼(8¾,8¾,9,9,9)in, ending with a WS row.

Cast off.

With RS facing, slip center 10sts onto a stitch holder, patt to end.

26 [28,32,33,37,41] sts.

Complete to match other side reversing shapings.

FINISHING

Press as described on the information page.

Join right shoulder seam using mattress stitch.

Neckband

With RS facing, using 5.5mm needles and yarn B pick up and knit

46sts evenly down left front neck, knit 10sts from front neck holder, pick up and knit 46sts evenly up right front neck, 2sts down back right neck, knit 22[22,22,24,24,24]sts from back neck stitch holder, pick up 2sts up left back neck. 128[128,128,130,130,130]sts.

Purl 1 row.

Cast off.

Join left shoulder and neckband seam.

Armband – right.

With RS facing, using 5.5mm needles and yarn B pick up and knit 26[28,28,30,30,30]sts evenly up lower right back armhole slope, pick up and knit 6[4,0,2,0,2]sts along middle back section, pick up and knit 26[28,28,30,30,30]sts evenly up top right back armhole slope, pick up and knit 56[58,58,60,60,60]sts down front armhole. 114[118,114,122,120,122]sts.

Purl 1 row.

Cast off.

Armband – left.

With RS facing, using 5.5mm needles and yarn B pick up and knit 56[58,58,60,60,60]sts up left front armhole, pick up and knit 26[28,28,30,30,30]sts evenly down top left back armhole slope, pick up and knit 6[4,0,2,0,2]sts along middle section, pick up and knit 26[28,28,30,30,30]sts evenly down lower left back armhole. 114[118,114,122,120,122]sts.

Purl 1 row.

Cast off.

Join side and armhole seams.

